



KERR COUNTY FAIR ASSOCIATION

Lamb, Goat, Steer & Swine Prospect Show October 28 & 29, 2017

\$20.00
entry
Cash
Only

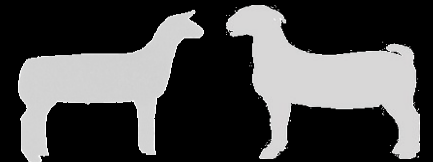
SWINE SHOW, October 28th

- 6:00 a.m. Hogs begin arriving
- 9:00 a.m. Weight cards due
- 9:30 a.m. Showmanship with show immediately following
- Gilts & Barrows will show separately; **NO BOARS**
- Maximum weight 165 lbs., 10 lb. weigh back
- **Judge Wayne Rode**



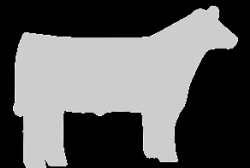
LAMB, GOAT, October 29th

- 6:00 a.m. Lambs & Goats begin arriving
- 8:00 a.m. Lamb Weight cards due
- ♦ 8:30 a.m. Lamb & Showmanship w/show immediately following



Lambs (wethers & ewes) Dorpers, Southdown, FW, FW Cross, & Medium Wool

- ♦ 11:00 a.m. Goats cards due (wethers & does) broken by weights **shown after lambs**
- 4 lb. weigh back on Lambs & Goats
- **Judge Robert Scott** (Lambs & Goats)



STEERS, October 29th

- 8:00 a.m. Steers begin arriving
- 10:00 a.m. Steer Weight cards due
- 11:00 a.m. Steer Showmanship w/show immediately following
- Blow & Show—American, British & Exotic
- 40 lb. weigh back
- **Judge Stephen Zoeller**

**Not TILA
Sanctioned
No Pre-Entry
Required
Bring your own
bedding**

Belt Buckles
&
Prize Money

KERRVILLE

3785 Hwy 27

Phone:
830-257-6568
Email:
kerr@ag.tamu.edu